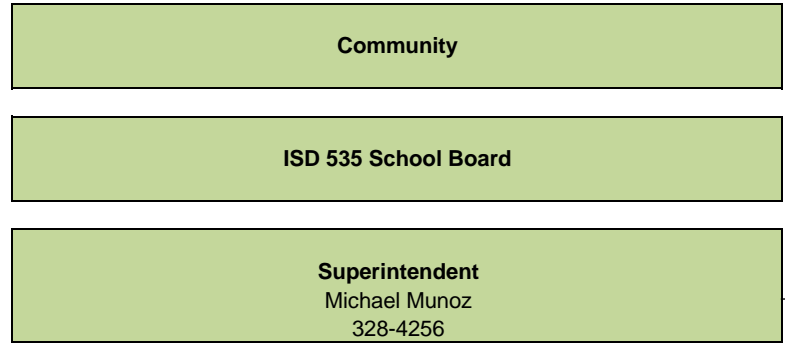


Rochester Public Schools - Organizational Chart, 2018-2019



- **Activities Directors**
- Mark Kuisle 328-5140
- Brian Ihrke 328-5331
- Jeff Whitney 328-5560

Executive Director of Elementary & Secondary Education
Jacque Peterson

Diane Paprocki - Office Mgr
328-4300

Executive Director of Curriculum and Instruction
Brenda Wichmann

Kris Lloyd - Office Mgr
328-4301

Executive Director of Student Services
Karla Bollesen

Heather Rivers - Office Mgr
328-4310

Executive Director of Community Education
Amy Eich

Melissa Garcia - Operations Mgr
328-4000

Executive Director of Finance
John Carlson

Kristi Yang - Office Mgr.
328-4210

Executive Director of Human Resources
Karl Bakken

Ari Bender - Office Mgr
328-4321

Executive Director of Communications, Marketing, and Technology
Heather Nessler

Brenda Longman - Office Mgr
328-4380

Executive Director of Operations
Scott Sherden

Donlie McLagan - Office Mgr
328-4400

- **Director of Elem & Secondary**
○ Chris Lingen 328-4304
- **POSA**
○ Jean Murphy 328-4303
- Enhancing & Sustaining Culturally Relevant Learning POSA
○ Afolabi Runsewe 328-4318
- **District Principals**
- **English Learners IA (TOSA)**
○ Katie Miller 328-4290
- **Coord. Of Bilingual Services**
○ Bryon Bothun 328-4237
- **District-Wide Options Placement**
- **Exception to Attendance**
- **Home School**

- **Career & College Readiness (CTE, CTECH, Research & Assessment) POSA**
○ Brandon Macrafcic 328-4401
- **Student Advancement (Gifted Services / AVID Coordinator) POSA**
○ Monica Bowler 328-4275
- **Elementary C & I POSA**
○ Kate Palmquist 328-4302
- **Secondary C & I POSA**
○ Heather Willman 328-4311
- **Implementation Associates (TOSA)**
○ Julie Ace 328-4308
○ Rebecca Mecikalski 328-4232
○ Jennifer Coenen 328-4235
○ Heather Lyke 328-4234
- **Instructional Equity K-12 Implementation Associate**
○ Kim Eversman 328-4338
- **Integration**

- **Director of Special Education**
○ Jen Ihrke 328-4312
- **Phoenix Academy/RAIL Principal**
○ Rob Scripture 328-4541
- **Asst. Director of Special Education - Elementary**
○ Melissa Stenke 328-4528
- **Asst. Director of Special Education - Secondary**
○ Nicole Mueller 328-4521
- **Asst. Director of Special Education - Early Childhood**
○ Koni Grimsrud 328-4903
- **Asst. Director of Student Services**
○ Denise Moody 328-4273
- **Transition and Fostering Connections Coordinator**
○ Melissa Brandt 328-4230
- **Coord. of Family Engagement & Community Partnerships**
○ Julie Ruzek 328-4354
- Equity Specialists
○ Rose-Martine Haglund 328-4291
○ Toby Taylor 328-4292
○ Willie Tipton 328-4293
- American Indian Liaison
○ Dawn Bjoraker 328-4236
- **Transition Family Support Coord.**
○ Lisa Weber 328-4287
- **Graduate Induction Program**
○ Colleen Sallee 328-4379
- **Student Services Accountant**
○ Andria Rogers 328-4274

- **Adult Literacy at Hawthorne**
- **Mgr of Instruction & Operations**
○ Nadine Holthaus 328-4466
- **Early Childhood Family Serv Mgr**
○ Jessica Mattson 328-4023
- Screening Coordinator
○ Mary Imming 328-4031
- **Youth Programs Manager**
○ Melissa Fredin 328-4042
- Youth Enrichment Coordinators
○ Elem, Linda Holm 328-4052
○ Sec, Kerry Novotny 328-4053
- **Adult Enrichment Coordinators**
○ Chrisanne Pieper 328-4060
- **Adult w/Exceptional Abilities Coord**
○ Stephanie Conkright 328-4063
- **Preschool Enrichment Coord**
○ Amy Ward 328-4030
- **Facilities & Rental Scheduling**
○ Steve Fanning 328-4008
- **Student Nutrition Services Coord.**
○ Sherri Knutson 328-4201

- **Finance & Accounting**
- **Accounting Manager**
○ Andrew Hoffbeck 328-4289
- Accounts Payable
- Accounts Receivable
- Fixed Assets
- **Budgeting Manager**
○ Eric Brown 328-4331
- Accountants
○ Laurie Handlogten 328-4263
○ Jared Kidder 328-4261
○ Jill Mullenbach 328-4220
- **Purchasing Manager**
○ Jackie Milnes 328-4410
- Purchasing
- Paper Tiger 328-4334
- **Total Rewards Coordinator**
○ Rebecca Perlich 328-4225
- **Total Rewards Supervisor**
○ Jennifer Berge 328-4214
- **Payroll Services**
○ Juli Donovan 328-4285

- **Coord of Human Resources**
○ Robert Cothorn 328-4252
- **HR Staffing Team Lead**
○ Julie Jimenez Coles 328-4222
- **HR Staffing Specialists**
○ Tammy Barrett 328-4253
○ Ari Bender 328-4500
○ Andrew Jaeger 328-4270
- **HR Data Specialist**
○ Lynette Johnson 328-4254
- **Health & Absence Support Specialist**
○ Jody Bangert 328-4249
- **Registration & Records Manager**
○ Melissa Goetsch 328-4215

- **Comm. Specialist / Graphic Design**
○ Nicolle Osterhout 328-4313
- **Comm. Specialist / Digital Media**
○ Cassandra Gehling 328-4339
- **District TV Coordinator**
○ Kurt Koehler 328-4376
- **Multimedia Producer**
○ Adrian Peil 328-4349
- **Technology Support Services**
- **Assistant Director**
○ Michael Johnson 328-4418
- Network Services Supervisor
○ Jamie Boeff 328-4390
- Tech. & Digital Learning Support Supervisor
○ Sean Kilpatrick 328-4419
- Technology Repair Supervisor
○ Bill Solem 328-4391
- Software Support Supervisor
○ Lora Holman 328-4387

- **Facilities & Construction**
- **Coordinator of Facility Services**
○ Andrew Sirek 328-4402
- **Health & Safety Coordinator**
○ Mike Stock 328-4434
- **Coordinator of Maintenance Services**
○ Jerry Ernst 328-4514
- **Asst. Coordinator of Maintenance Services**
○ Jim Allhiser 328-4429
- **Coordinator of Construction Services**
○ Bill Burt 328-4505
- **Construction Project Asst.**
○ Cole Nelson 328-4508
- **Transportation Services**
- **Transportation Manager**
○ Jeff Kappers 328-4223